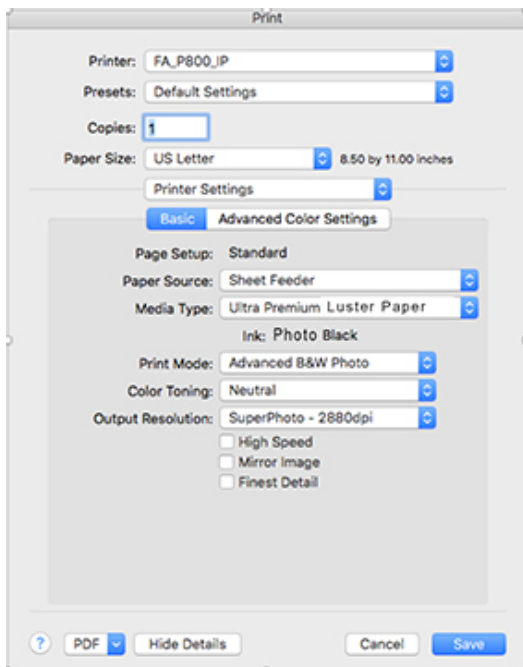
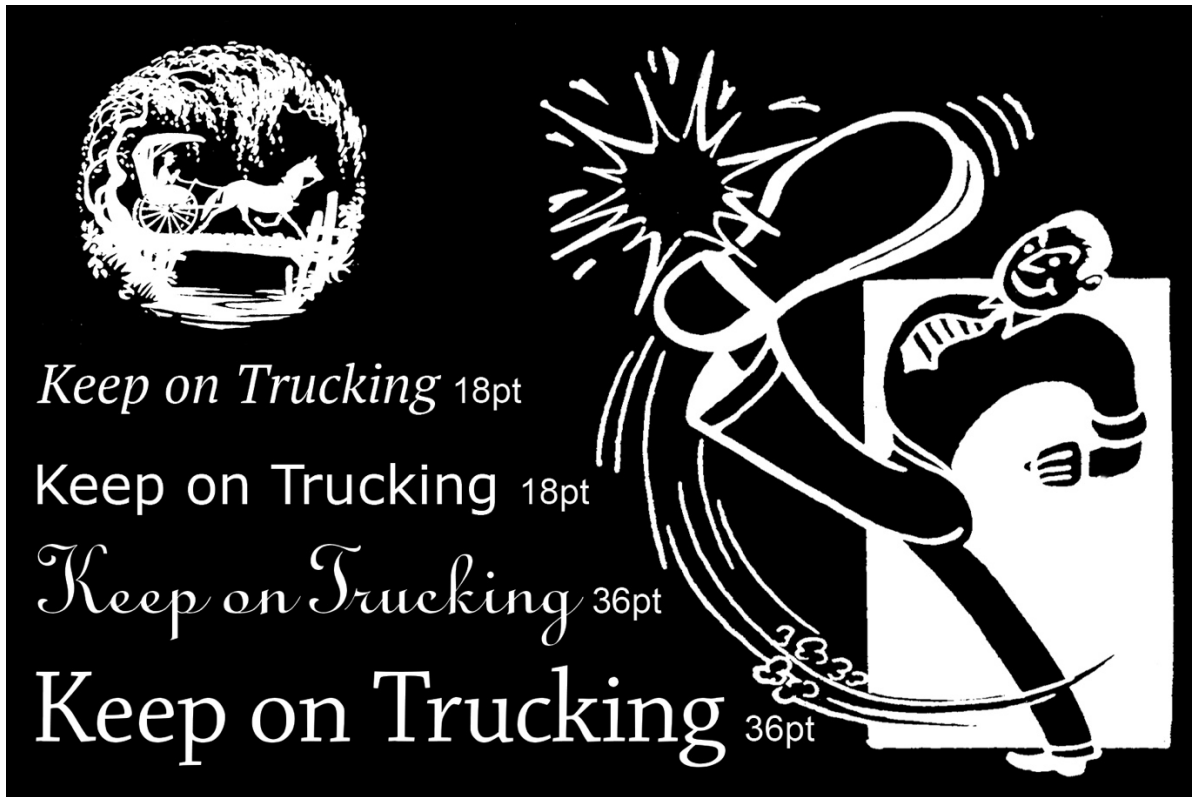


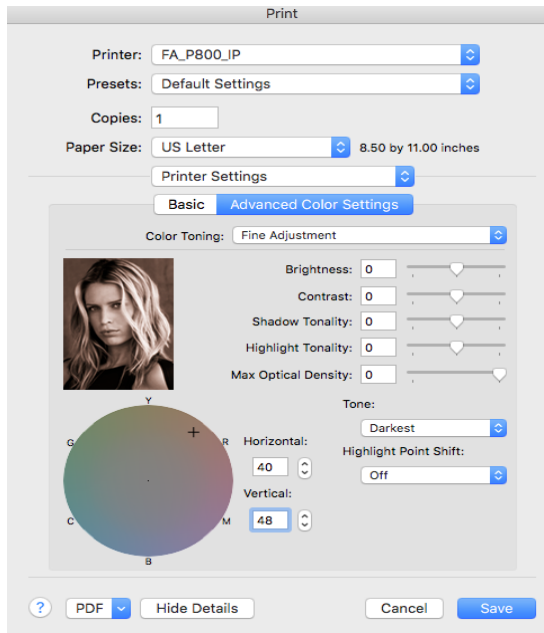
Printing Letterpress Negatives with OHP film



Prepare image making it look just the way you want it to print. Letterpress can't print continuous tones. The image needs to be broken into a halftone or turned into line art. Make image monochromatic but keep it in Adobe RGB (1998) color space, then flatten your image. Set the image size to the size you wish to print with resolution set to 360 ppi.

Print your negative on OHP transparency film on the Epson P800 with printer manages color and the settings shown on the left.

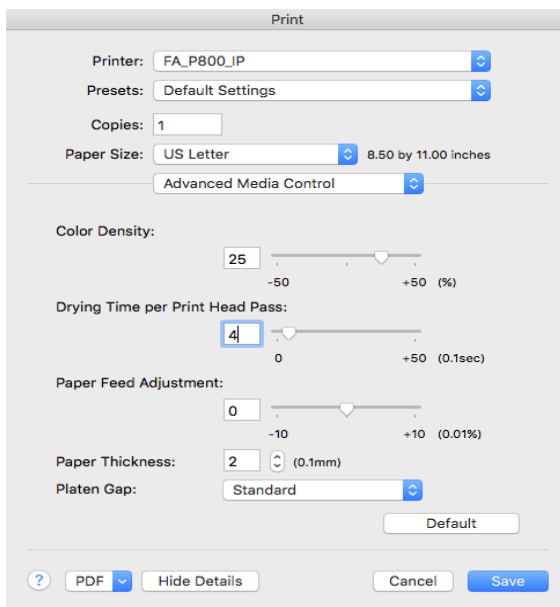
To access Advance B&W under Print Mode you will need to have Epson Color Controls turned on. This is found under Color Matching.



Output Resolution is set to SuperPhoto - 2880 dpi for the Epson P800.

The Advanced Color Settings goes to an option called Color Toning. The Tone setting should be changed to Darkest. This will make the Epson printer apply more ink to the transparency film. Then set the Horizontal and Vertical color coordinates in the boxes to the right of the circular color picker to 40 (Horizontal) and 48 (Vertical). These numbers will tone the image a brownish color which helps the inks block light correctly.

Change Print Setting to Advanced Media Controls and increasing the Color Density number to 25 which will make for more ink, increasing density in the negative. Set the Drying Time to 4 to allow the ink more time to dry on the negative.



You can save all of these settings by selecting the arrows on Presets and Saving your current settings as a preset. Here I have saved my settings as OHP Letterpress Negative.

Make sure you print on the correct side of the OHP film. The emulsion is facing you when the corner notch is in the top right corner.